

# SUMMARY OF 2024 SURVEY OF RURAL LANDHOLDERS IN NORTH CENTRAL VICTORIA



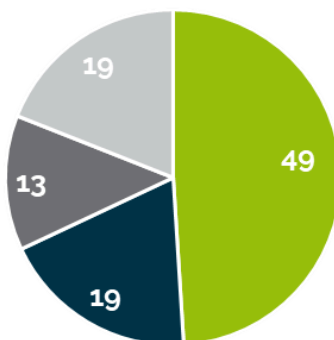
In 2024, over 2000 landholders in North-Central Victoria were randomly selected to take part in a rural landholder social benchmarking survey as a part of a national project, funded by the Soil CRC and North Central CMA. This followed up on a similar survey implemented in 2019. Landholders from across the region returned 389 survey forms. This short summary of results provides an overview of demographics, challenges and aspirations of landholders in North Central Victoria. Full reports located at [Soilcra.com.au](https://Soilcra.com.au).

## About Our Respondent Landholders

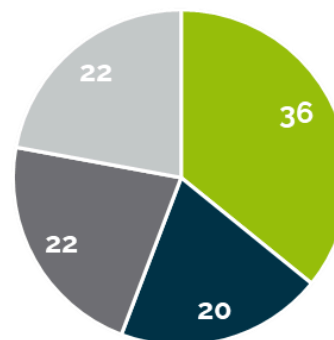


- **Full-time Farmers:** 64 years, 93% male, 54 hours worked each week
- **Part-time Farmers:** 62 years, 83% male, 24 hours worked each week
- **Hobby Farmers:** 63 years, 69 % male, 16 hours worked each week
- **Non-farmers:** 71 years, 69% male, 16 hours worked each week

2019%

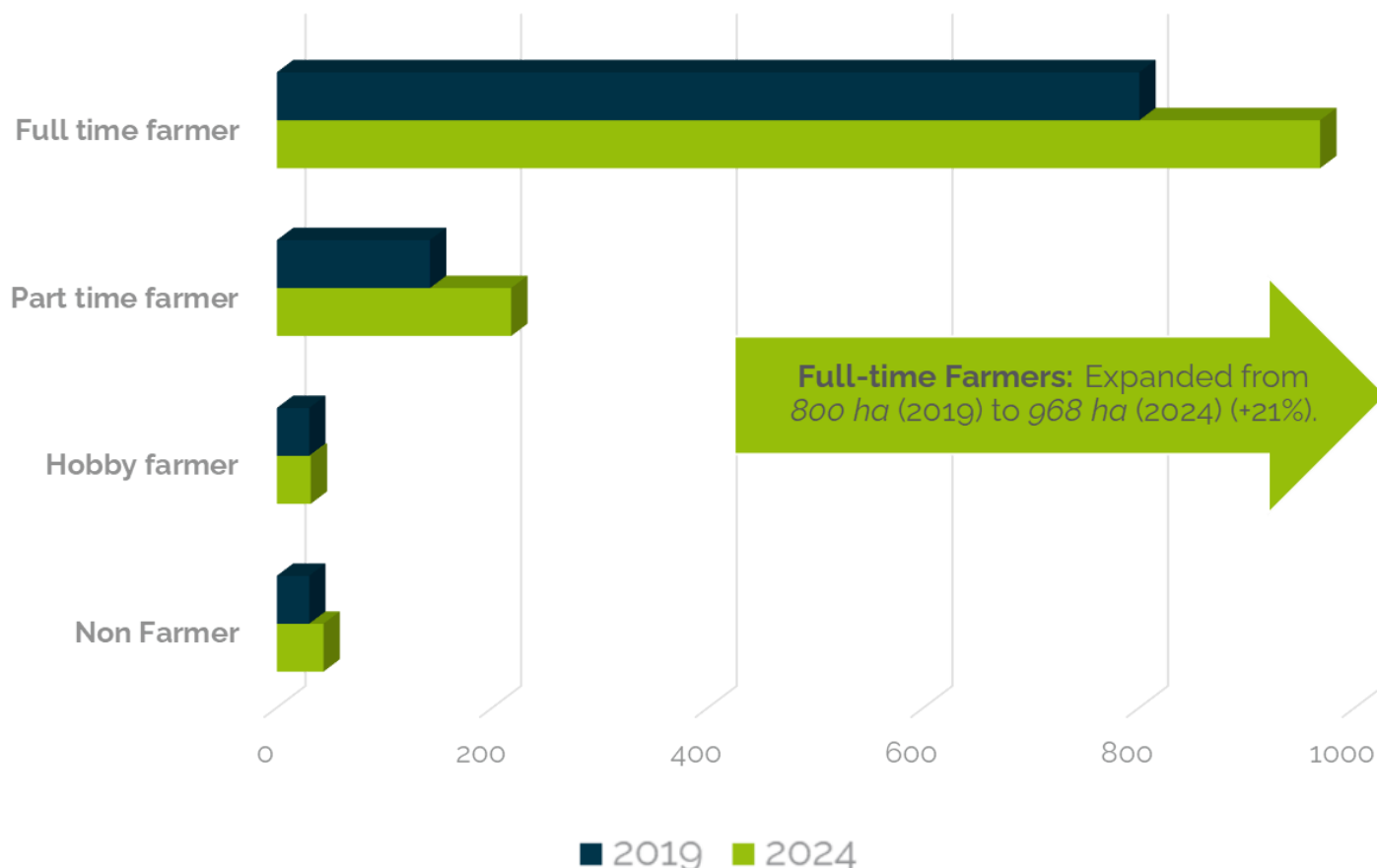


2024%



■ Full time farmer ■ Part time farmer  
■ Hobby farmer ■ Non Farmer

## Average Land Area 2019 - 2024



## Key Issues, All Landholders 2019 - 2024

### Key Issues 2019

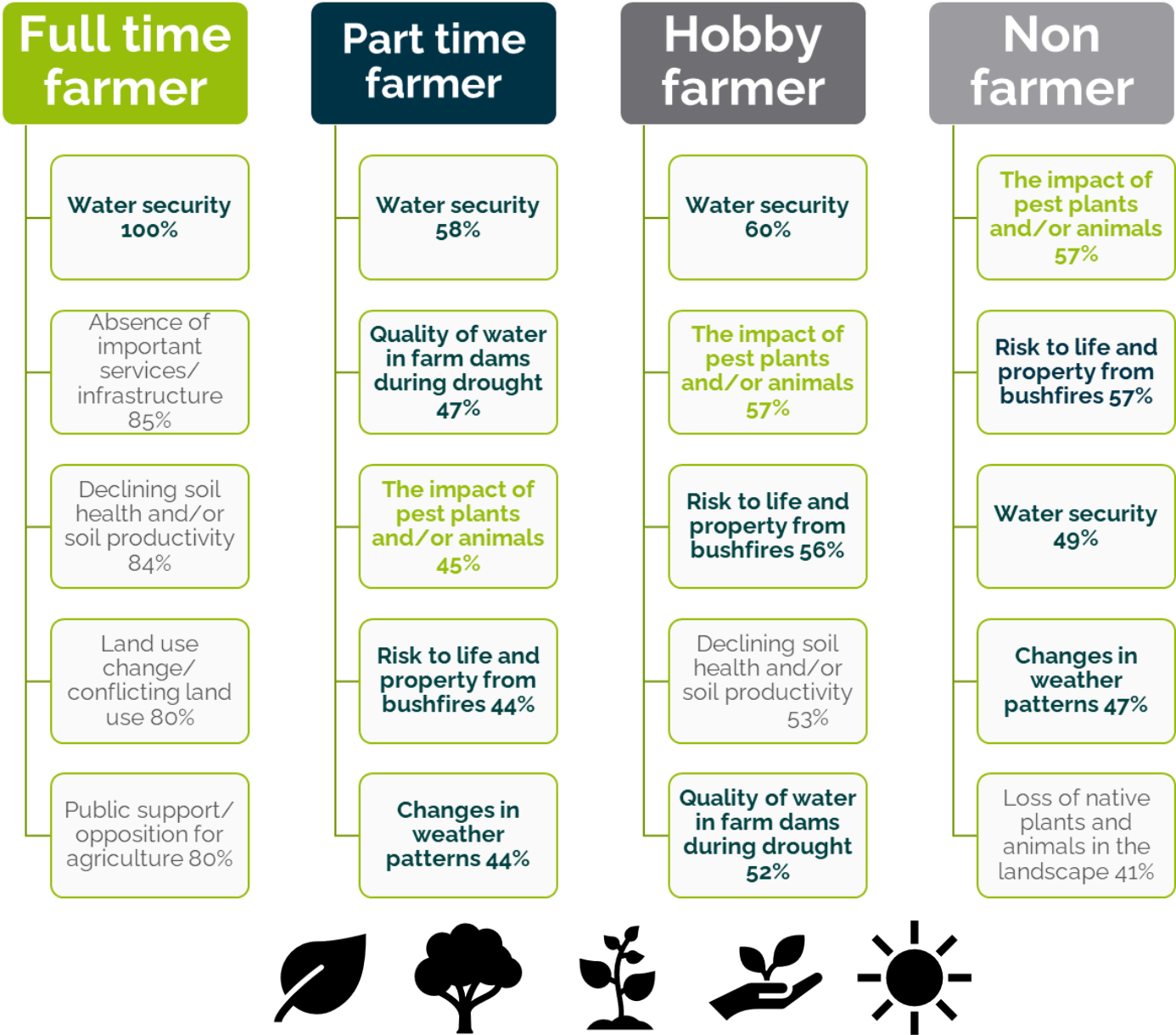
1. Changes in weather patterns 77%
2. Soil erosion (e.g. by wind or water) 73%
3. The impact of pest plants and animals on natives 73%
4. Quality of water in farm dams during drought 72%
5. Risk to life and property from wildfires 70%
6. Crop weed resistance to herbicide 67%

### Key Issues 2024

1. Water security 79% #
2. Rising input costs 74% #
3. Impact of pest plants and animals on native spp. 69%
4. Declining soil health and/or soil productivity 68%
5. Impact of weeds/pest spp. including natives 66%
6. Changes in weather patterns 65%

# Water security & rising input costs were not included in the 2019 survey

Key Issues By Landholder Type 2024

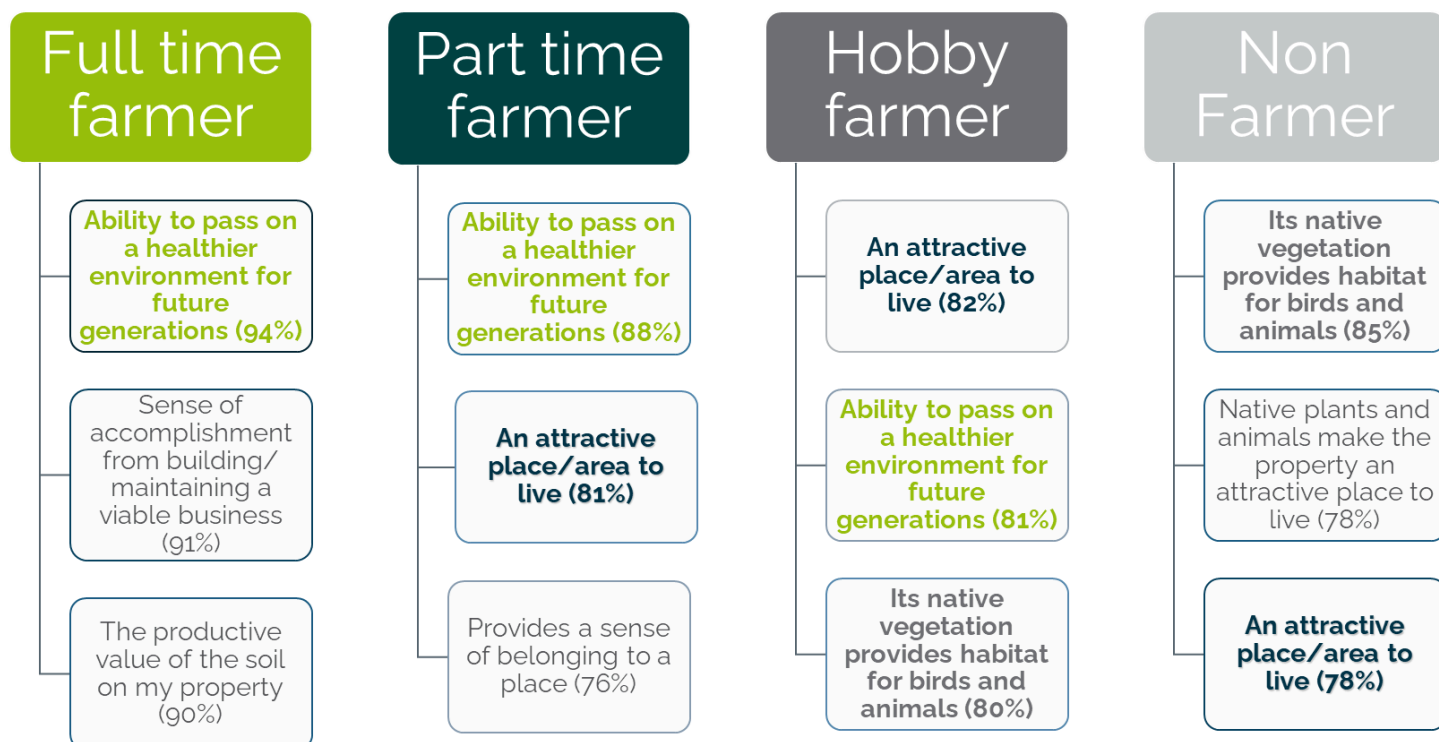


Succession-Planning

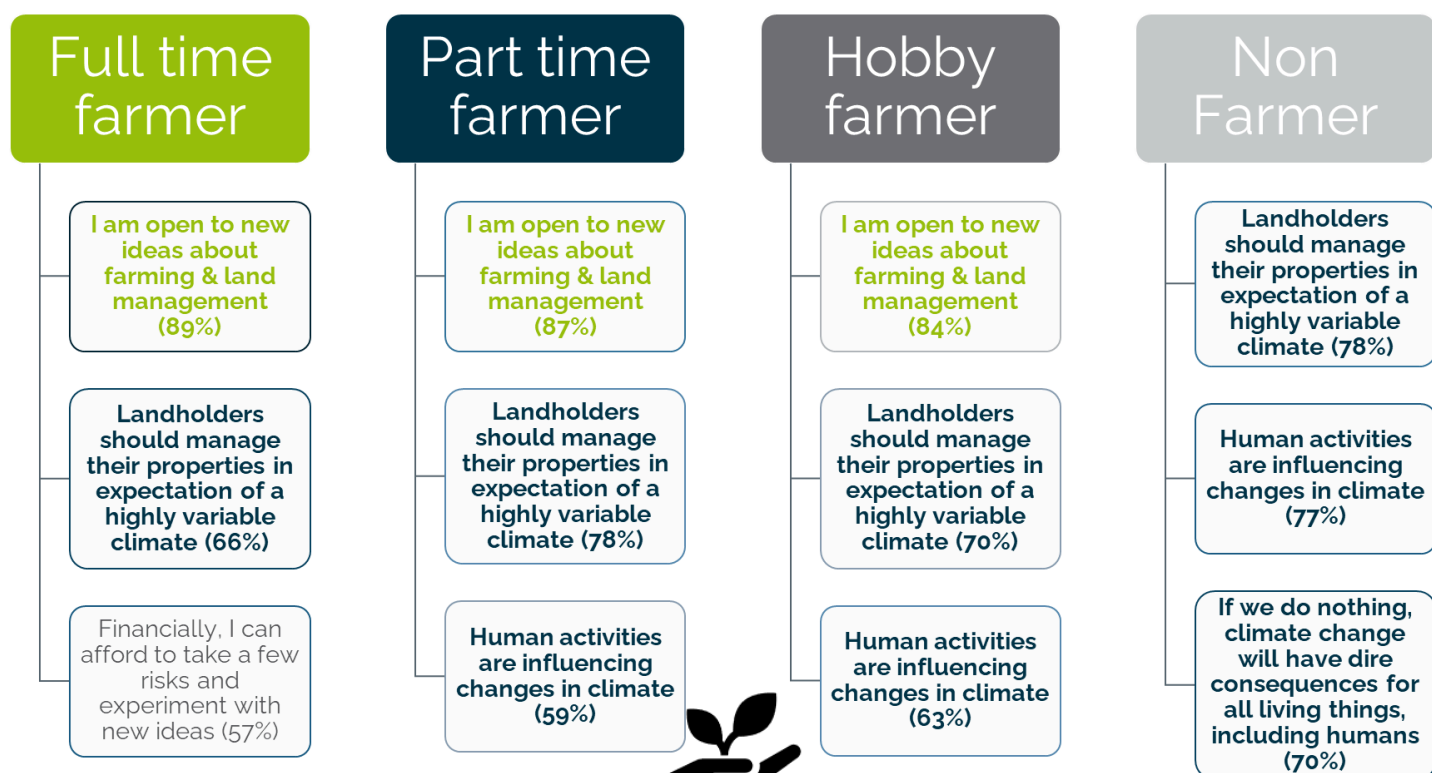
Succession-Planning for Farmers (full and part -time farmers combined)



## Values Landholders Associate with their Properties



## Landholder Views About Risk, Trust and Climate



Infographic developed  
by Mathew  
Alexanderson,  
Hanabeth Luke,  
Catherine Allan &  
Simon McDonald.



Full report coming  
early 2025.  
Visit us at  
[Soilcrc.com.au](http://Soilcrc.com.au) for  
more information.